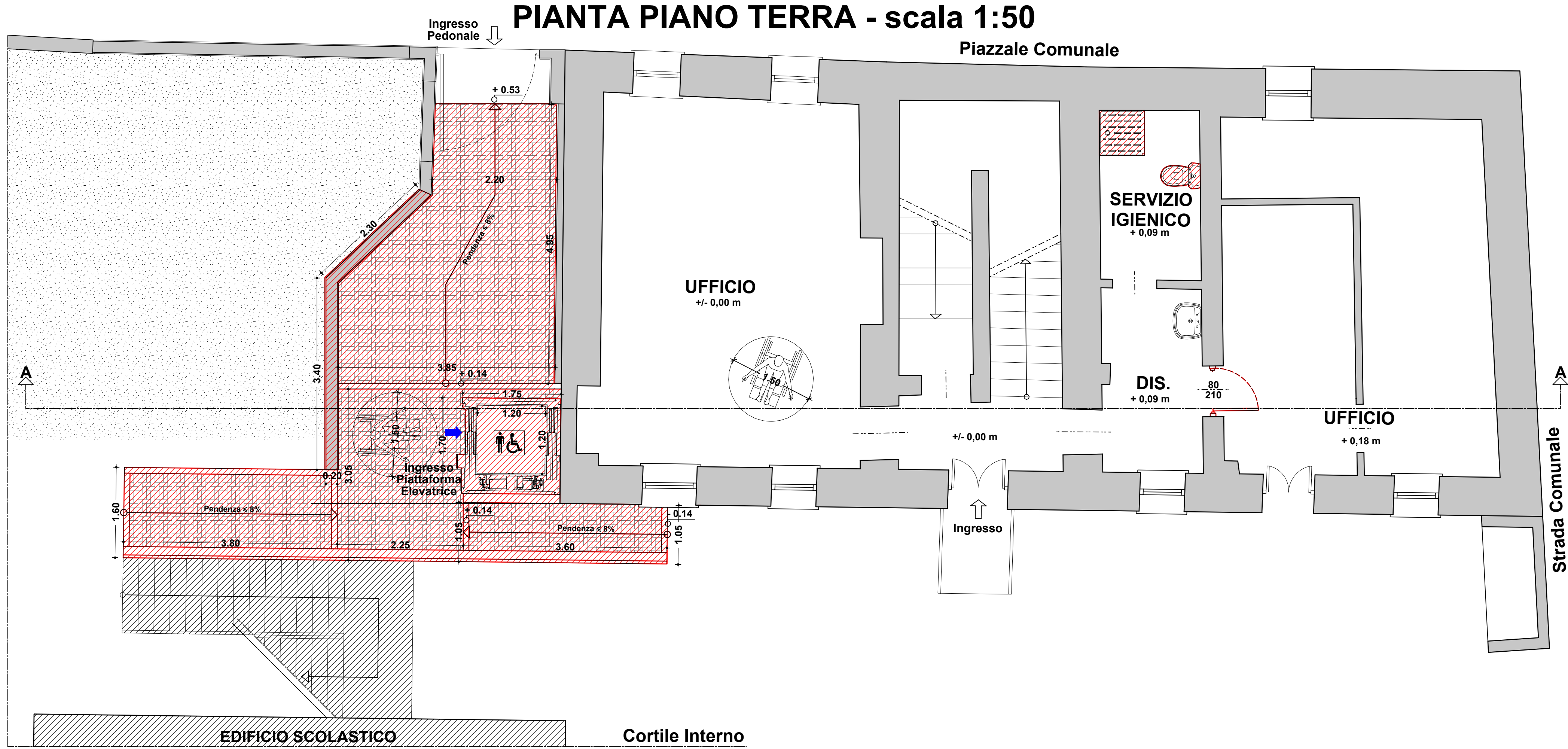
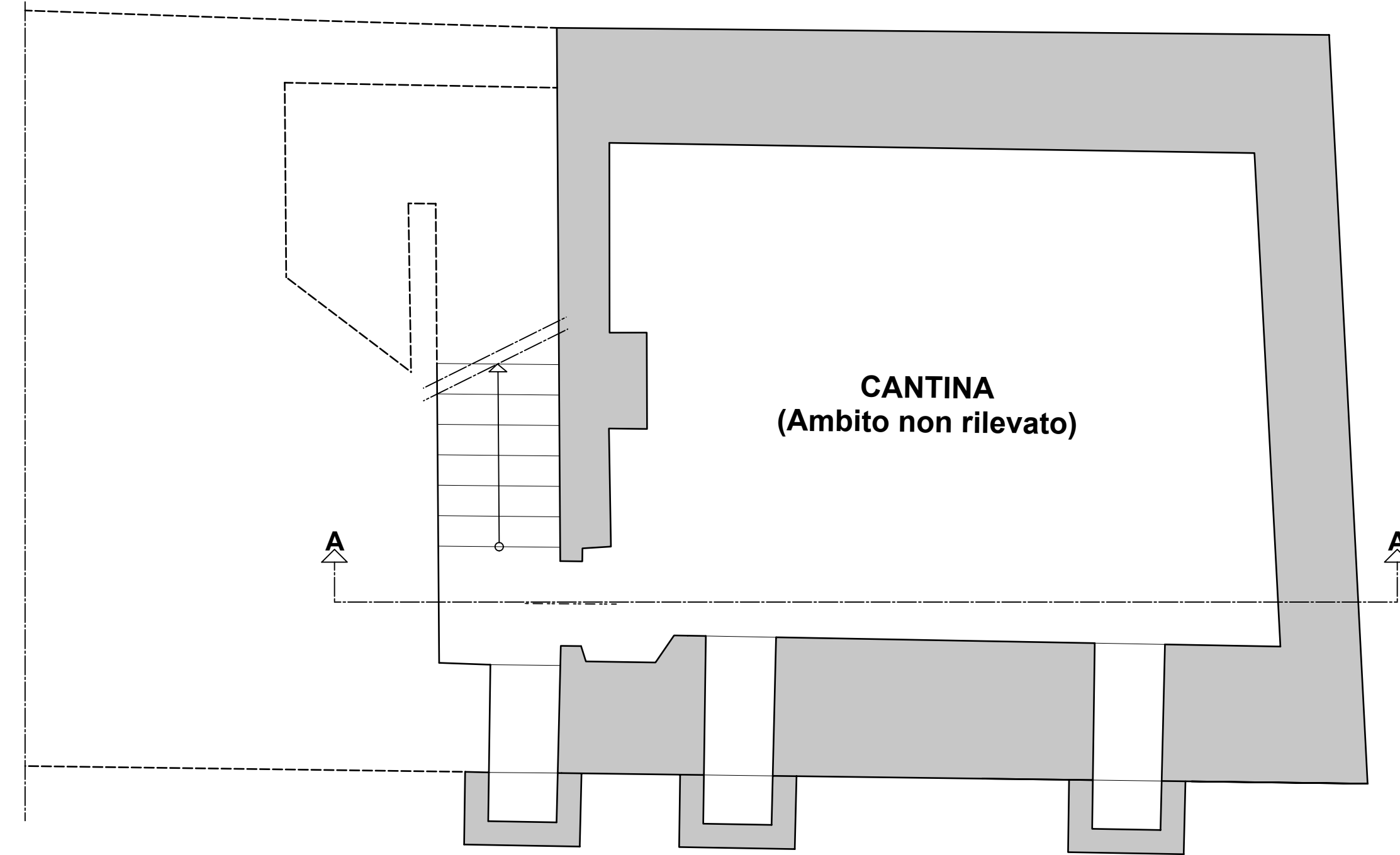


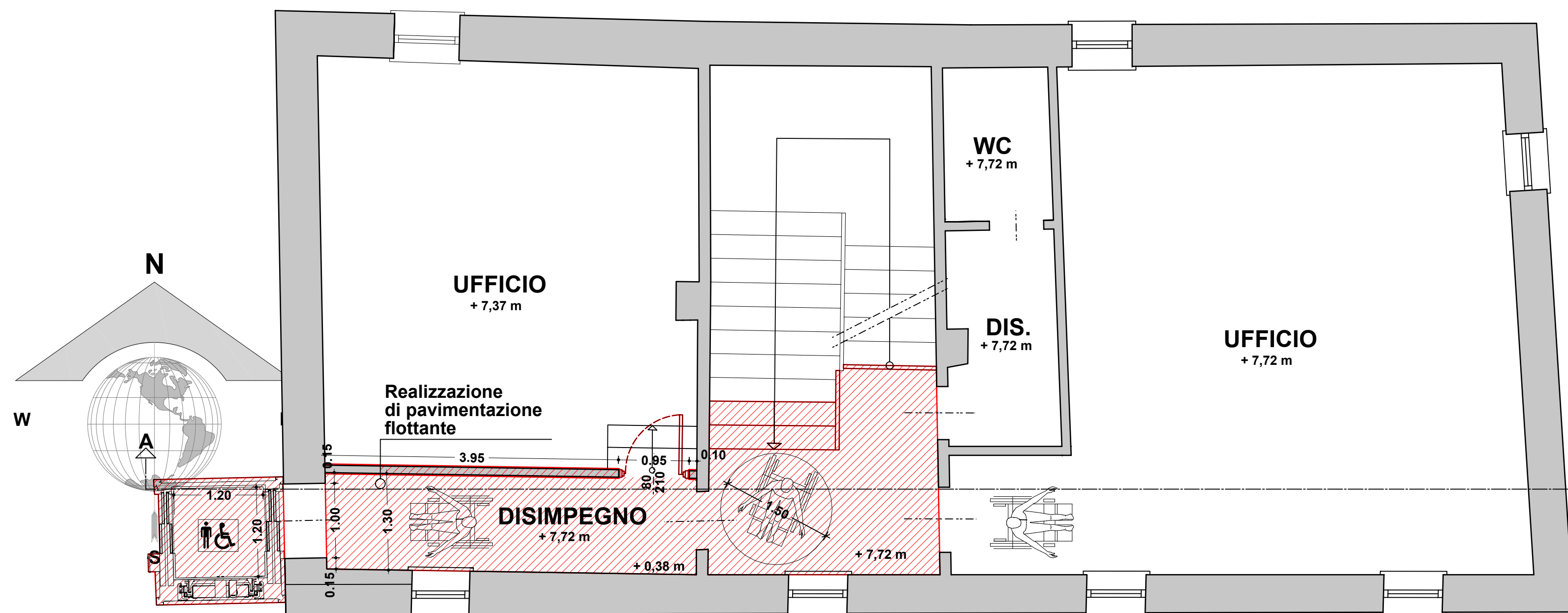
PIANTA PIANO TERRA - scala 1:50



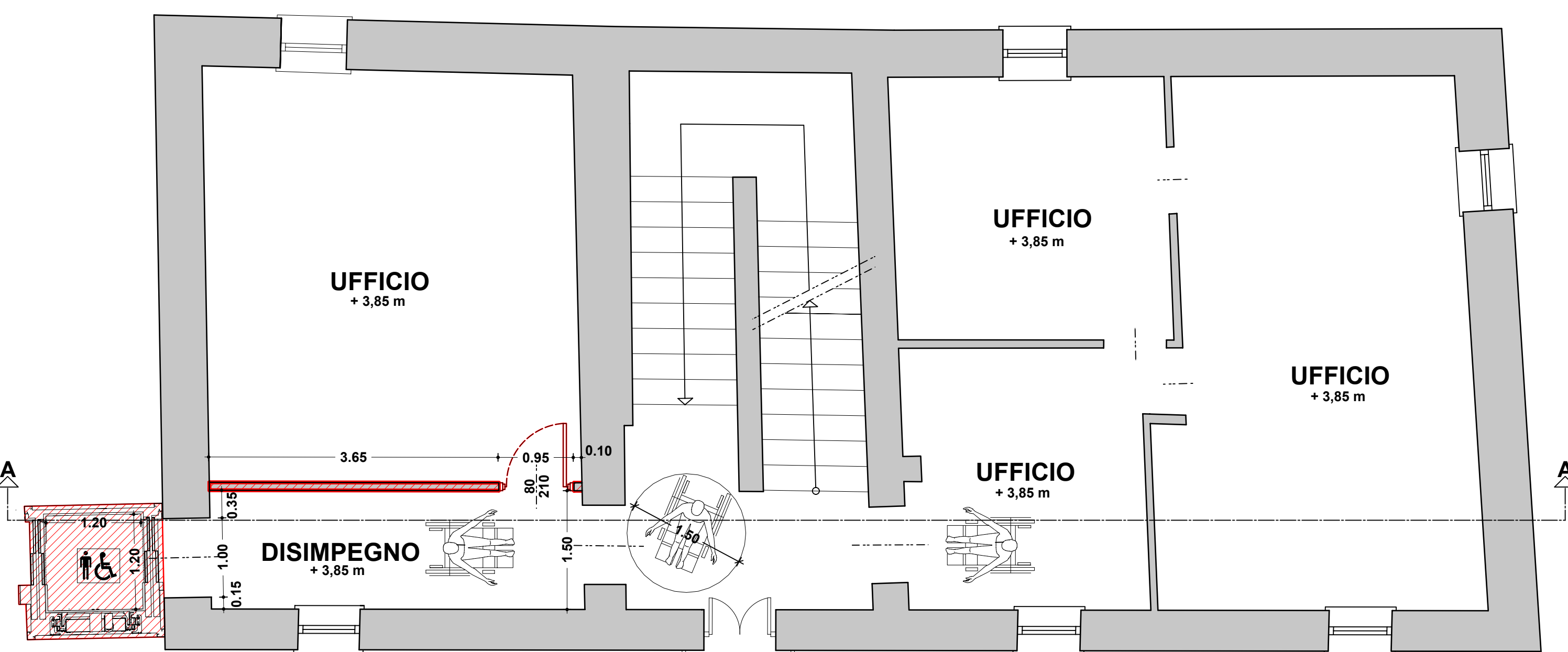
PIANTA PIANO INTERRATO - scala 1:50



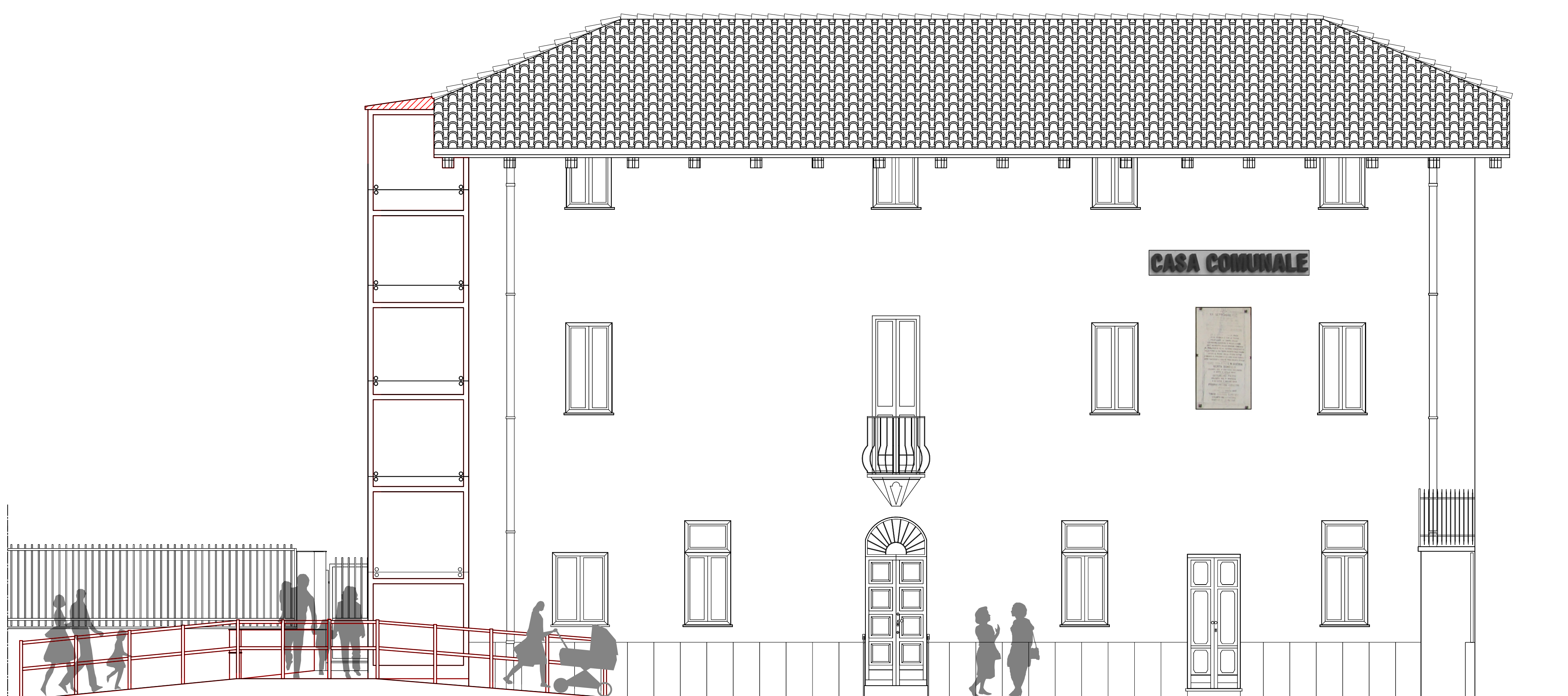
PIANTA PIANO SECONDO - scala 1:50



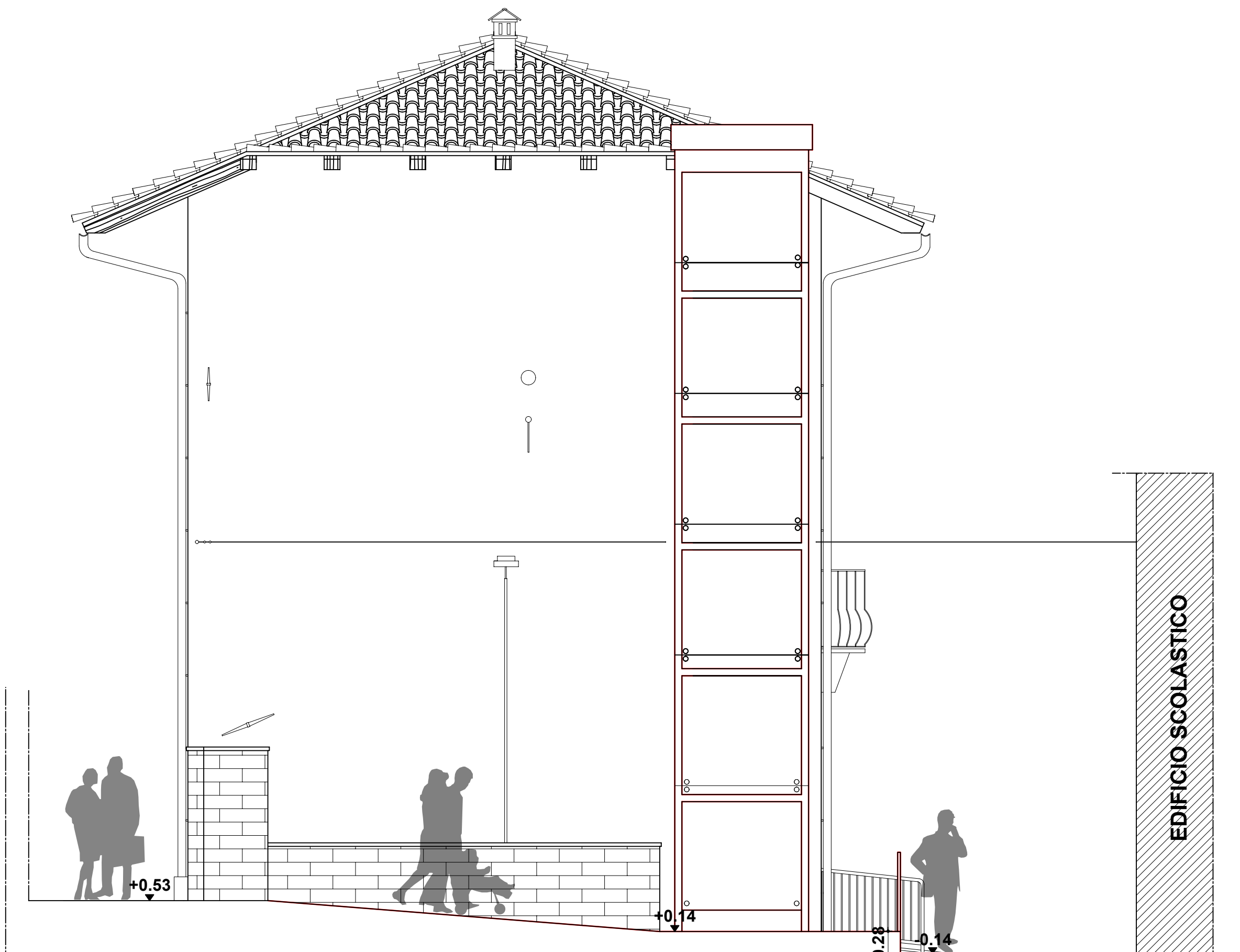
PIANTA PIANO PRIMO - scala 1:50



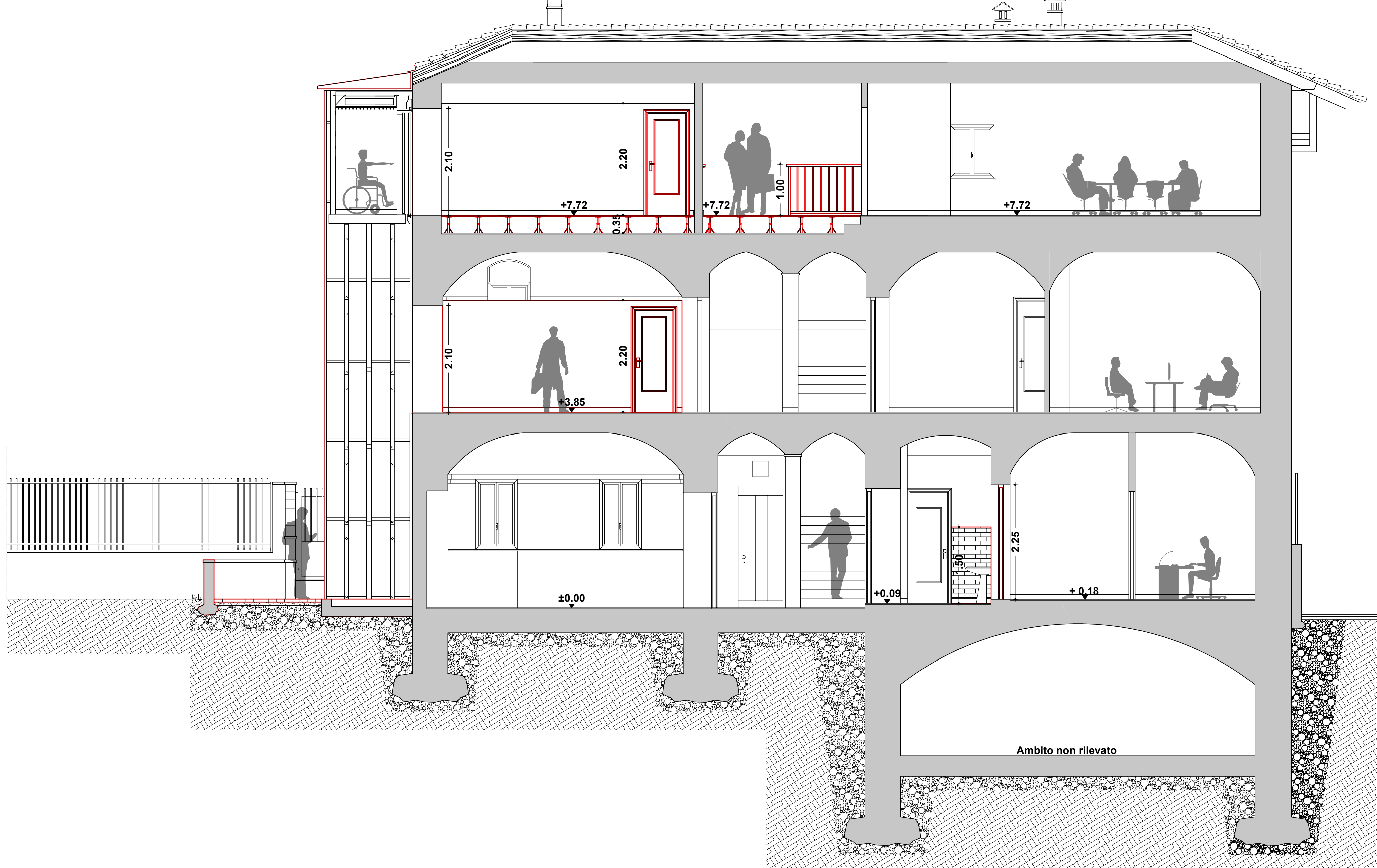
PROSPETTO SUD - scala 1:50



PROSPETTO OVEST - scala 1:50



SEZIONE AA - scala 1:50



REGIONE PIEMONTE  
CITTA' METROPOLITANA DI TORINO  
COMUNE DI MONTALENGHE



PROGETTO: ABBATTIMENTO BARRIERE ARCHITETTONICHE  
RELATIVO ALL'EDIFICIO DEL PALAZZO COMUNALE  
**PROGETTO DEFINITIVO / ESECUTIVO**

PROPRIETA': COMUNE DI MONTALENGHE  
Partita IVA 01156620013  
Via Cavour n. 2 - 10086 Montalenghe (TO)  
Tel. 011.9839458 - Fax 011.9839282  
e-mail: info@comune.montalenghe.to.it

PROGETTISTA: ARCH. NIGRO DOMENICO  
Partita IVA 0424660015  
Vicolo Dezzutti n°6 - 10090 San Giusto C.se (TO)  
Tel. e Fax 012435754  
e-mail: arch.nigro@libero.it

Timbro e Firma



TAVOLA  
3  
MAGGIO 2016

SITUAZIONE IN PROGETTO